

temizoda  
marketi.COM

**GARMENTS**



info@temizodamarket.com  
www.temizodamarket.com

# Who We Are?

## Our Aim

### Who We Are?

Temizoda Marketi started its business life in 1995 with İNŞEL Yapı ve Teknik Donatım Sistemleri Ltd. Sti. Specializing in cleanroom consultancy, design, implementation, documentation, and training, İNŞEL aims to meet the needs of personnel working in cleanrooms, sterile areas and critically controlled areas when it aims to provide turnkey services in the projects it implements.

İNŞEL, which has started to supply consumables in Cleanrooms, sterile areas and critically controlled areas through its representatives since 2004, has separated this department from its body in time in order not to cause confusion for our valued customers and to provide better service led to creation of Temizoda Marketi Laboratuvar Ürünleri A.Ş.

Today, as Temizoda Marketi, we are always with you, our valued customers, from product selection to training with our professional and experienced staff, while following the technology closely to provide you with the best service in the most accurate way.

### Our Aim

As Temizoda Marketi, we know our valued customers from the very beginning, from the installation of your hygienic area and Cleanrooms, and we know your needs. We are aware of how important it is to use the right material in the right place, and we are always at your side to supply you with the best quality and right products with the most appropriate solutions. We supply the highest technology products for you, and we are with you wherever you need, from training to after-sales user Support.

We know that choosing the right product is never the cheapest or the most expensive, and at this point, we help you with the most optimum benefit options...

# Why Temizoda Marketi?

*We know you; we know your needs and we are here to help you in the best way*

As Temizoda Marketi, we try to get to know you first and learn about your business, processes, and needs and offer you the most suitable solutions.

As Temizoda Marketi, we are always happy and proud to assist you with our trained and experienced staff.

We are working to give you the best and highest quality service with our experienced staff dedicated to each department.



As Temizoda Marketi, we are always happy and proud to assist you with our trained and experienced staff.

We are working to give you the best and highest quality service with our experienced staff dedicated to each department.

Choosing the right product is one of the most important issues in cleanrooms and critically controlled areas.

As Temizoda Marketi, we choose the most accurate and best quality products for your business in line with your demands and goals and recommend them by making them economical.

The materials used in critically controlled areas are as special and important as the areas you work in.

We know that the most suitable product for you is not always the most expensive or the cheapest, but it should be the best quality. In order to offer you the optimum solution, as Temizoda Marketi, we offer you the products you need by diversifying them with alternatives from different brands.

As Temizoda Marketi, we know the importance of the documentation of all materials you use in critically controlled areas, and we provide all documents, certificates, analysis reports, and all necessary documentation for you, that are necessary, during the installation phase, application and validation.

Temizoda Marketi does not only approach you as a product supplier. At the same time, it stands behind the products it sells and does not hesitate to take all necessary actions to eliminate it when you have any problems.

It does not sell products without the full support of the companies it represents. When there is a problem about the products, Temizoda Marketi approaches the issue as if using it himself and ensures that it is resolved as soon as possible. Thus, you will get maximum efficiency from the product you have bought.

As Temizoda Marketi, we would like to help you with all the products you need with our wide product range. Even if the product you need does not appear in our catalog, we try to find the product you are looking for with our partners abroad. Thus, we provide you with one-stop service as sole responsibility.

Temizoda Marketi does not only supply you with products, but also provides training, which is one of the greatest necessities of our time. No matter how accurate the product is in critically controlled areas, incorrect or unconscious use can cause unwanted problems. Upon request, it provides the necessary training for the products you have purchased, either by itself or by the manufacturer.

# Our Representatives

We are working with well-established companies that have proven their quality all over the world in auxiliary products used in clean rooms, sterile areas, laboratories and other critically controlled areas, to provide you with the best and right product.

- Cleanroom Consumables (Wipes, Gloves, Swabs, Mats,...)



Reinraum-Produkte GmbH

IAB Reinraum-Produkte GmbH

<http://www.iab-reinraumprodukte.de/>



Protect2Clean

[www.protect2clean.com/](http://www.protect2clean.com/)



REINIGUNGSTECHNIK

Pfennig Reinigungstechnik GmbH

[www.pfennig-reinigungstechnik.com](http://www.pfennig-reinigungstechnik.com)



ABEBA Spezialschuh-Ausstatter GmbH

[www.abeba.com](http://www.abeba.com)



Bimos - Interstuhl Büromöbel GmbH

[www.bimos.com](http://www.bimos.com)



GERMANY

- Cleanroom Mop Systems.

- Cleanroom Shoes

- Cleanroom Chairs



UK

- Cleanroom Wipes with highest quality possible

- Cleanroom consumables, disinfectants and Alcohols

- Clean & Sterile Ppe For Life Science



Berkshire Corporation

[www.berkshire.com](http://www.berkshire.com)



MicronClean Ltd

[www.micronclean.com](http://www.micronclean.com)



ISOfield

[www.isofield.com](http://www.isofield.com)



Univet

[www.univetsafety.com/](http://www.univetsafety.com/)



ITALY

- Cleanroom Goggles



CANADA

- Cleanroom Sticky Mats, Papers, Shoes and Glove Liners



Purus International Inc.

[www.purusint.com](http://www.purusint.com)



MALAYSIA

- Cleanest Cleanroom Gloves



Riverstone Resources

[www.riverstone.com.my](http://www.riverstone.com.my)



BELGIUM

- Cleanroom Garments



Alsico High Tech

[www.alsicohightech.com](http://www.alsicohightech.com)

# Our Representatives

bimos

UNIVET  
OPTICAL TECHNOLOGIES

ISO field  
Protecting Life Science

alsico  
hightech

micronclean  
QUALITY TODAY - INNOVATION TOMORROW

PURUS

Berkshire  
REGISTERED CLEAN

PROTECT  
2CLEAN

IAB

Reinraum-Produkte GmbH

PPS  
PFENNIG PROFI SYSTEM

ABEBA®

## ➤ Cleanroom Garments

- Coveralls (Reusable/Disposable & Sterile/Non-Sterile)
- Coats (Reusable/Disposable & Sterile/Non-Sterile)
- Bonnets (Reusable/Disposable & Sterile/Non-Sterile)
- Hats (Reusable)
- Hoods (Reusable/Disposable & Sterile/Non-Sterile)
- Overshoes (Reusable/Disposable & Sterile/Non-Sterile)
- Over Boots (Reusable/Disposable & Sterile/Non-Sterile)
- Socks (Reusable/Disposable & Sterile/Non-Sterile)
- Masks (Reusable/Disposable & Sterile/Non-Sterile)
- Shoes

## ➤ Cleanroom Gloves

- Sterile Gloves (Latex & Nitrile)
- Non-Sterile Gloves (Latex, Nitrile, Polyethylene, Vinyl)
- Finger Gloves (Latex & Nitrile)
- Knitted Gloves

## ➤ Cleanroom Wipes

- Sterile Wipes
- Dry Wipes
- Pre-Saturated Wipes
- Sponge Wipes

## ➤ Swabs

## ➤ Cleanroom Mats / Floorings

- Sticky Mats
- Permanent Mats

## ➤ Cleanroom Stationary

- Notebooks (Rule, Grid, A4, A5)
- Papers (A3, A4, A5)
- Pens (Sterile & Non-Sterile, IPA Resist.)
- DCR Pads
- Tapes
- Rolls

## ➤ Cleanroom Cleaning Equipment

- Mops (Single use / Re-Usable)
- Mop Systems
- Mop Heads
- Vacuum Cleaners
- Isolators

## ➤ Cleanroom Disinfection Systems

- Disinfection Systems (Wet - Dry)
- Disinfectants
- Disinfection Service
- Alcohols

## ➤ Cleanroom Goggles

## ➤ Cleanroom Filters

- HVAC Filters
- Hepa Filters
- Water System Filters (RO System)
- 100% Endotoxin Removal Filters
- Cross Flow Filters

## ➤ Cleanroom Furniture

- Work Benches
- Racks
- Chairs
- Transport Trolleys

## ➤ Cleanroom Cabinets

- LF Units
- Bio-Safety Cabinets

## ➤ Air Shower

## ➤ Isolators

## ➤ Biological Indicators



**BASIC MODEL 01**  
with additional equipment:  
knitted cuffs on sleeves and  
trouser legs



**BASIC MODEL D01**  
with additional equipment:  
knitted cuffs on sleeves



**BASIC MODEL 01**  
with additional equipment:  
knitted cuffs on sleeves and  
trouser legs



**COVERALL WITH INTEGRATED HOOD**  
With studs or antistatic cuffs at the legs

- Integrated hood with studs
- Strap with buckle at the back of the hood for adjustment
- Concealed zip front fastening
- Raglan sleeves with antistatic cuffs
- 3 studs on each side of the legs to attach boots
- Adjustable elastic in the back
- Marker fabric
- No pockets



**CLEANROOM COVERALL**

- Suitable for autoclaving and gamma irradiation.
- Centre front zip fastening coverall.
- Stud adjustments at neck, wrist and ankles.
- Raglan sleeves.
- Mandarin collar.
- Full cleanroom construction.
- Heat sealed edges.
- Seams are twin needle stitched



**COVERALL**  
with studs or antistatic cuffs at the legs

- Stand collar with 2 studs
- Concealed zip front fastening
- Raglan sleeves with antistatic cuffs
- Studs for name tag on left chest
- 3 studs on each side of the legs to attach boots
- Adjustable elastic in the back
- Marker fabric
- No pockets



**BEMICRON ORIGINAL**

- A design that moves the zip from away the area of highest risk
- Our existing cleanroom fabric that benefits from ESD properties provides the same performance and process life as our existing coverall.
- BeMicron garments are also fully compatible with both gamma and autoclave terminal sterilisation methods.
- ISO 14644-1:2015 Cleanrooms Class 6 and above
- GMP Grade A - D Environments



**CLEANROOM COVERALL**

- with Integral Hood
- Centre front zip fastening coverall
- Raglan sleeves
- Attached hood with stud closure at the front
- Vertical / horizontal stud adjustments at the rear
- Stud adjustments at waist / wrist / ankles
- Heat sealed edges



**TOP DOWN COVERALL**

- with integrated hood integrated hood with eye-opening
- Integrated face mask in the hood
- Strap with buckle at the back of the hood for adjustment
- Zipper closure between the legs
- Raglan sleeves with antistatic cuffs
- 3 studs on each side of the legs to attach boots
- Adjustable elastic in the back
- Marker fabric
- No pockets



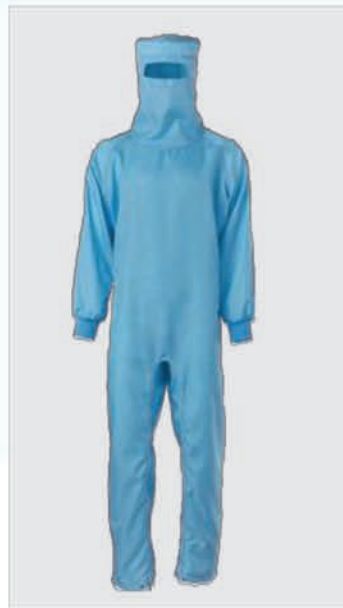
**REUSABLE OVERALL IAB**

This washable cleanroom coverall is made from state-of-the-art cleanroom fabric.



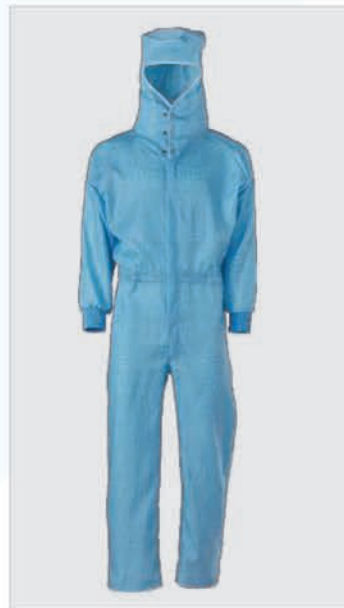
**BASIC MODEL C05**

Coverall with zipper at legs and integrated hood with open field of view



**BASIC MODEL C07**

Coverall with zipper at legs and integrated eye slit hood



**BASIC MODEL 01**

with additional equipment: knitted cuffs on sleeves



**BASIC MODEL 01**

Overall with zipper at legs



# cyclop<sup>®</sup>

cyclop<sup>®</sup> consists of a cleanroom suit with a goggles unit directly integrated into it, in combination with a ventilation circuit.

All risks of skin exposures are eliminated, vision remains crystal clear at all times and operators work in comfort-levels never experienced before in the cleanroom industry!



## A Breath Of Fresh Air

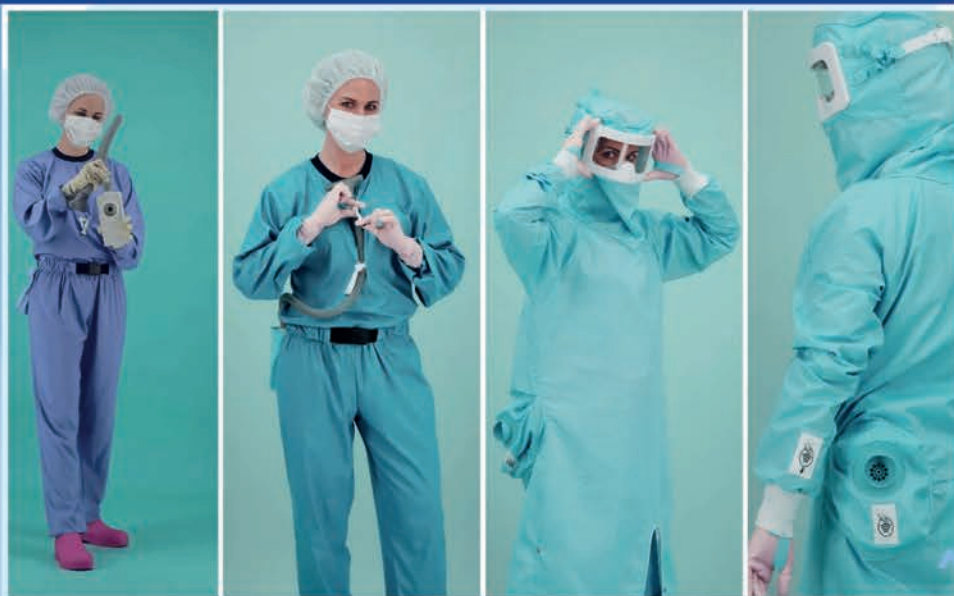
The Swiss engineered cyclop<sup>®</sup> A1 ventilation circuit is a breath of fresh air compared to existing ventilation solutions. It is much lighter (386g including battery), quieter (<55dB at full speed) and is designed more ergonomically, thanks to the positioning next to the hip bone. The airflow can be controlled using a touchless connection (sterile) with an NFC chip in the sleeve of the suit.

Resistant to 70% isopropyl alcohol  
Sterile control (NFC chip)  
Noise signal for speed change and ON | OFF  
Li-ion battery (8hrs operating time)  
cyclop<sup>®</sup> A1 device and ventilation circuit

## Easy does it

cyclop<sup>®</sup> makes gowning surprisingly easy and time saving.

In only a few steps and with limited possible contamination points the cleanroom operator is fully dressed and ready for work. Extensive research went into the garment design of the cyclop<sup>®</sup> suit, the body box test results & CFU count are excellent.



**cyclop<sup>®</sup>** is a completely reusable system with high recyclability rate of the components.



The disposable coverall "Tyvek IsoClean IC 193B" is a sterile hooded coverall from DuPont. This has bound internal seams. He also has integrated overboots.



**Coverall SimSafe® SC05-S**

- Simsafe SC05-S is a sterile, fully validated protective suit with hood and front flap
- PPE CAT. III - Type 4, 5 and 6
- Excellent protection against hazardous substances such as cytostatic drugs
- ISO4 or GMP A/B sterile environments
- Protecting the wearer and the product
- Size: S-XXXL
- 65% Polyester / 35% Polyethylene
- Colour: White
- Simsafe code: SC05-S



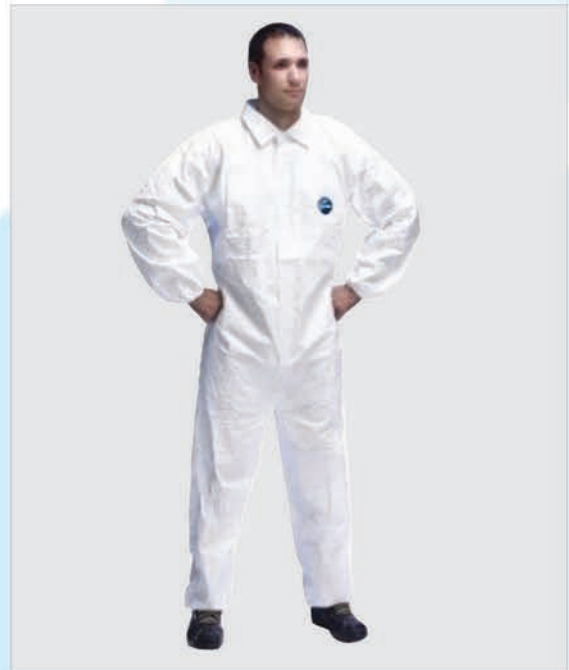
The disposable coverall "**Tyvek® IsoClean® IC 183B WH DS**" without a hood is processed and gamma-sterilized under clean room conditions.



This "**disposable coverall**" with a hood made of polypropylene spunbonded material has a zipper and elastic cuffs. No pockets.



**Coverall SimSafe® SC05**  
Hooded Disposable Coverall offers exceptional comfort and protection. All seams are completely welded. The overall offers the best protection when handling cytostatics at the moment



The **Tyvek® 500 Industry (Model CCF5) (formerly Tyvek® Industry)** is a disposable collared coverall for work in cleanrooms such as the pharmaceutical industry where protection from human contamination is required. The overall belongs to category III, type 5/6 chemical protective clothing. The internal seams reduce the risk of contamination from the suit.



**Overall Tyvek® 500 Xpert** Based on decades of practical experience, the new TYVEK® 500 Xpert (model CHF5) from DuPont now offers even more protection against a variety of hazards. This disposable coverall is the latest generation of the flagship category III, Type 5B and 6B chemical protective clothing. It offers 6x more protection against solid flying particles than its predecessor, the TYVEK® Classic, and 10x more protection than suits made from microporous film. In addition, it has a 3x higher protection against liquids than suits with conventional quilted seams.



**Overall Tyvek® 400 Dual**

Extensive, breathable SMS panel from head to ankles for optimized comfort. Ergonomic three-piece hood offers freedom of movement for the head. Hood back made of air and water vapor permeable SMS.

External seams provide protection against particle penetration into the interior of the suit. Hermetic closure at all critical points of the suit: zip with Tyvek® flap, elasticated cuffs and ankles, elasticated hood.

Category III, Type 5/6 chemical protective clothing



**HOOD - FLAT TOP**

- Concealed zip front fastening
- 2 studs to attach face mask
- 2 side openings for cleanroom goggles
- Strap with buckle at the back for adjustment
- Marker fabric



**HOOD - BALLON SHAPED TOP**

- Concealed zip front fastening
- 2 studs to attach face mask
- 2 side openings for cleanroom goggles
- Strap with buckle at the back for adjustment
- Marker fabric



**HOOD - FLAT TOP**

- Concealed zip front fastening
- 2 studs to attach face mask
- 2 side openings for cleanroom goggles
- Strap with buckle at the back for adjustment
- Marker fabric
- Ear pieces in mesh fabric



**HOOD - FLAT TOP**

- Small eye-opening
- 2 side openings for cleanroom goggles
- Strap with buckle at the back for adjustment
- Marker fabric



**HOOD - BALLON SHAPED TOP**

- Concealed zip front fastening
- 2 studs to attach face mask
- 2 side openings for cleanroom goggles
- Strap with buckle at the back for adjustment
- Marker fabric



**Full cover hood basic Model 20 with ballon Shaped top (bouffant)**



**Full protection hood special Model 23, narrowed field of vision, bouffant top, special design for spectacle wearers**



**Eye slit hood basic Model 21 with flat top**



**Eye slit hood special Model 21, gauze in the mouth-nose area, flat top**



**Basic Model 40**



**Basic Model 43**



**Standard Cleanroom Hood**



**Basic Model 25**  
Mouth area made of cleanroom fabric



**Basic Model 26**  
Mouth area made of gauze, semicircular



**Basic Model 24**  
Mouth area made of gauze,

## DISPOSABLE HOODS



**Reusable Hood**



**Astro Hood**  
is made of polypropylene fleece in one size. It fastens around the neck with two ribbons. In addition to hospitals and operating theaters, it also offers possible uses in the food industry.



The sterile "Tyvek® IsoClean® Hood IC 689 B WH TS" comes with the blue mask and ties attached. The hood has taped inner seams as well as a taped face opening. Straps for an adjustable fit in the chest area.



**One-Weight Hood/Hood Tyvek Iso-Clean IC 668 B"** is a hood processed under clean room conditions and sterilized by gamma rays with internal seams and a bordered hood opening. It features a large face opening and ties and loops



**DuPont Tyvek® IsoClean® hood** Processed and gamma sterilized under clean room conditions. Hood: bound seams. Bordered head opening. Ribbons with loops. White



**DuPont Tyvek® IsoClean® hood**, model IC 729 S WH MS. Processed and gamma sterilized under clean room conditions. elastic. White.



**DuPont Tyvek® IsoClean® hood**, model IC 729 S WH 00. Processed under clean room conditions and not gamma sterilized. elastic. White.



**Spunbond Beret Caps** are made of breathable, comfortable and soft spun polypropylene (SBPP) material, which is commonly worn in clean & hygienic areas, laboratories, cleanrooms, hospitals & medicine, food industries etc. It is ideal for economical protection against non-hazardous dust particles and dirt in the work area.



**Baseball Cap**  
Standard version: cleanroom fabric elastic at the back  
Colour: white  
checkered  
One size fits all



**Bouffant cap basic model 62**



**Hood with elasticated neck part basic model 63**



**Peaked cap basic model 66**



**Cap with neck guard customer model**

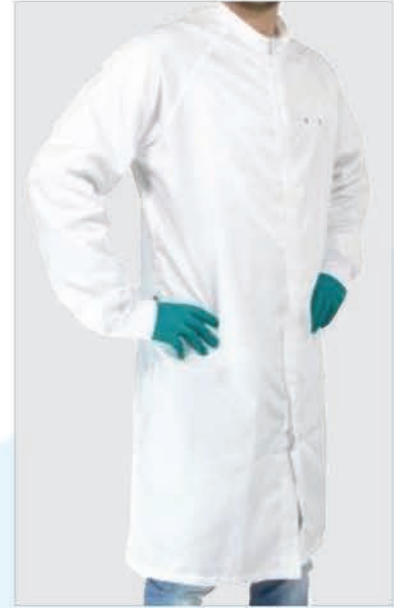




**DuPont Tyvek® IsoClean®** gown with bound neckline, model IC 270 B WH MS. Bound internal seams. Covered elastics on sleeves. Snap button closure at front. Processed and gamma sterilized under clean room conditions. Aseptically folded. White.



**The visitor coat / work** coat made of polypropylene spun fleece has a collar. He also has elastic wrists and 4 snaps on the front.



**Cleanroom Long Gown**  
The standard version of our long coat consists of a state-of-the-art clean room fabric.



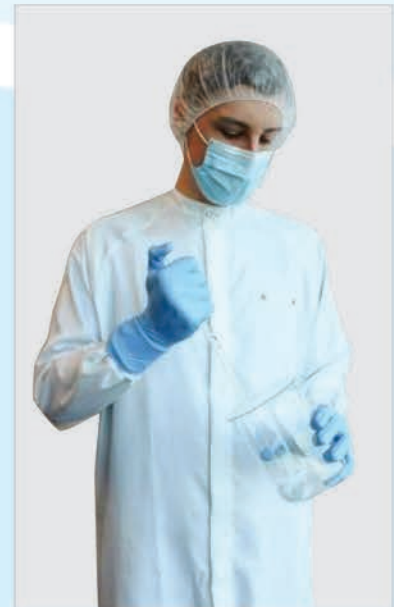
**Short coat**

- Stand collar with 2 studs
- Concealed zip front fastening
- Raglan sleeves with antistatic cuffs
- Studs for name tag on left chest
- Marker fabric
- No pockets



**Coat with integrated hood**

- Integrated open hood with studs
- Concealed zip front fastening
- Raglan sleeves with antistatic cuffs
- Studs for name tag on left chest
- Marker fabric
- No pockets



**Coat**

- Stand collar with 2 studs
- Concealed stud front fastening
- Raglan sleeves with antistatic cuffs
- Studs for name tag on left chest
- Marker fabric
- No pockets



**Cleanroom Coat Lancer Style with Side Fastening**



**Cleanroom Coat with Centre Fastening**



**Basic model 02 with additional equipment: knitted cuffs on sleeve ends**



**Basic model 08 with additional equipment: knitted cuffs on sleeve ends and zipper in front**



**Basic model D02 with additional equipment: knitted cuffs on sleeve ends**



**Basic model 03 with additional equipment:**  
knitted cuffs on sleeve ends



**Basic Model 43**



**Special model shortened with zip in model colour**  
**Special model with elasticated cuffs on sleeve ends**  
without coloured piping



**Special model shortened with zip in model colour**



**Basic model 06 with additional equipment:** knitted cuffs on trouser ends



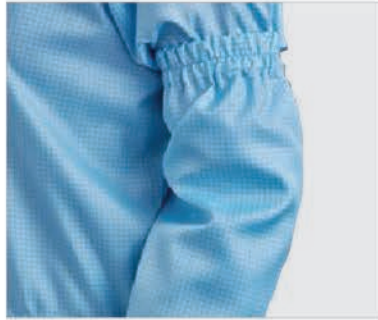
**Basic model H01 (Jeans style)**



**Basic model 90**



**Basic model 70**, 40 cm long, with slight elastic bands



**Basic model 70**, 40 cm long, with broad elastic bands



**Basic model 70**, 40 cm long, with broad elastic bands



**SimSafe® SAE05-S**



**SimSafe® SAE05**



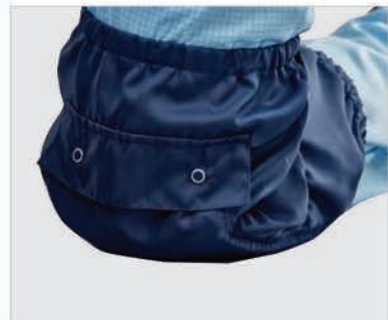
**Disposable sleeve protector Taptex sterile** is equipped with cuffs. It is recommended for work where soiling or contamination of clothing must be prevented.



**Taptex sleeve protectors** are equipped with elastic rubber cuffs. This can be used for work where soiling or contamination of clothing must be prevented.



**Tyvek® IsoClean® IC 501** is processed and gamma sterilized under clean room conditions. It has bound internal seams. Covered elastic bands on sleeves and biceps



**Customer model**, knee protector with pocket for pads



**Basic model S11**



**Basic model 56 with additional equipment:** band with snap action buckle on top, bootleg without zipper



**Basic model 53 with additional equipment:** 2nd buckle in the front part of the foot



**Basic model S14 with additional equipment:** tie at the top and strap around ankle



**Overshoes basic model 50**



**ESD shoe with textile shaft**



**Clog with textile shaft**



**Overstocking with soft outer sole**



**Boot without zipper**

- Coloured strap with 2-piece buckle over the foot
- Antistatic sole Combi P
- Reinforcement tape around the sole
- Strap and studs at the top of the boot for adjustment
- Studs to attach the boot to the coverall
- Marker fabric



**Boot with zipper**

- Coloured strap with 2-piece buckle over the foot
- Antistatic sole Combi P
- Reinforcement tape around the sole
- Strap and studs at the top of the boot for adjustment
- Zipper in the front
- Studs to attach the boot to the coverall
- Marker fabric



**Cleanroom Boots**



**Reusable overshoe flat**

The flat overshoes are washable and equipped with elastic and a flap. These have a soft sole.



**Tyvek® shoe covers high, model POBA**



**Taptex overshoes high** is equipped with an extremely slip-resistant sole that offers very good slip resistance, especially in wet and humid conditions.



**Taptex overshoes flat** is equipped with an extremely slip-resistant sole. Very good slip resistance, especially in wet and humid conditions.



**CPE overshoes strong quality** is a white, flat, disposable overshoe for heavy use with very good durability.



**A flat standard disposable overshoe suitable for any use.**



**PP/CPE overshoe** is equipped with a strong non-slip polyethylene sole and a strong fleece material.



**Carbon Stripe Shoe Cover** is a blue SMMS non-woven fabric overshoe with a black conductive carbon stripe (98% polyester, 2% conductive threads).



**OverbootSimSafe® SOB05**



**OverbootSimSafe® SOB05-S.**



**Cleanroom overshoes (reusable overshoes)** made of state-of-the-art cleanroom fabric. High design with a firm, non-slip rubber sole.



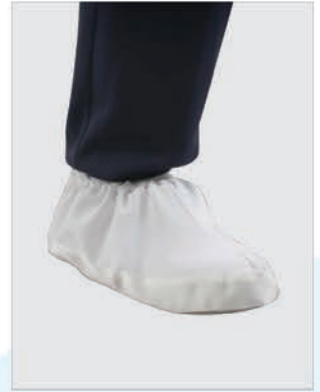
**Carbon Strip Overshoe** is a disposable overshoe made of polypropylene and a conductive polyester strip.



**IsoClean overboot IC 458** has a non-slip sole. Covered elasticated calves. ankle straps. Elasticated leg ends. Gripper™ sole. Bound internal seams. Not processed under clean room conditions and not sterilized. White.



**PP overshoe** is a light and breathable overshoe with a white non-slip pattern on the sole.



**Overshoe** elastic at the top Hypalon sole reinforcement tape around the sole



STERILE

**DuPont Tyvek® IsoClean®** overboots, model IC 458 B WH MS. Covered elasticated calves. ankle straps. Elasticated leg ends. Gripper sole. Bound internal seams. Processed and gamma sterilized under clean room conditions. Aseptically folded. White



**Jacket basic model 33**



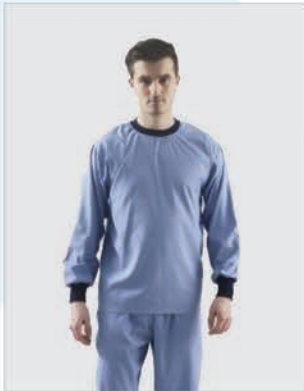
**Reusable Underwear T-shirt long"** is ultra light and breathable. It is made from light-weight micropolyester and has cuffed arms.



**T-shirt short sleeve, basic model 82**

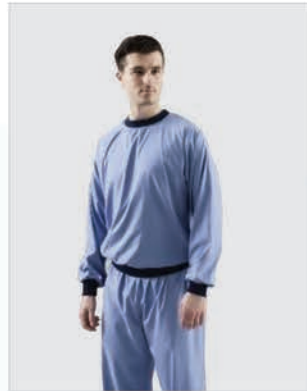


**T-shirt long sleeve, basic model 83**



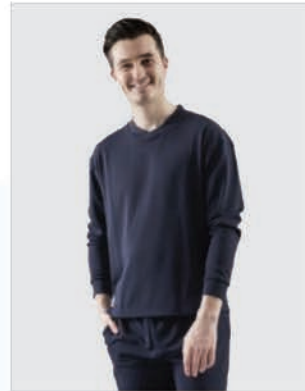
**Tunic - seamed Waistband**

- Knitted crew neck
- Long inserted sleeves
- Knitted fabric at sleeves
- Seamed at the waist
- Marker fabric



**Tunic - knitted Waistband**

- Knitted crew neck
- Long inserted sleeves
- Knitted fabric at sleeves and waist
- Marker fabric



**Tunic**

- V-neck
- Long sleeves
- 2 side vents
- seamed at the waist



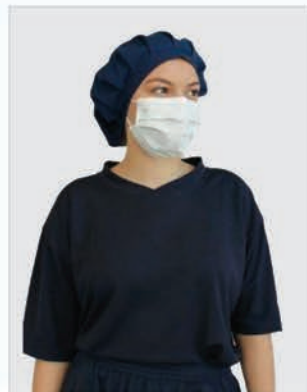
**Tunic - knitted waistband**

- Knitted crew neck
- Short inserted sleeves
- Knitted fabric at the waist
- Marker fabric



**Tunic - seamed waistband**

- Knitted crew neck
- Short inserted sleeves
- Seamed at the waist
- Marker fabric



**Tunic**

- V-neck
- Short inserted sleeves
- 2 side vents
- Seamed at the waist



**Undergarment Tunic (Long Sleeve)**

- Relaxed 'tracksuit' fit
- Front neck closure with three studs
- Two side vents
- No pocket
- No collar and edge bound neck
- Long wear life



**Undergarment Tunic (Short Sleeve)**

- Relaxed 'tracksuit' fit
- Front neck closure with three studs
- Long wear life





**T-shirt long sleeve in three colour design**



**Pullover (long sleeve) basic model 86 with additional equipment:** upper button bar and slightly elasticated waistband on sleeves and hip



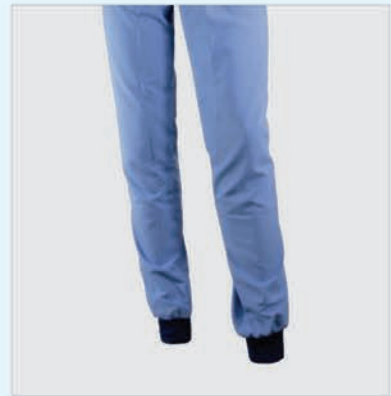
**Overall basic model 31 with additional equipment:** elasticated bands on arm and leg ends



**Basic model 90 made from Light-Tech II with knitted cuffs**



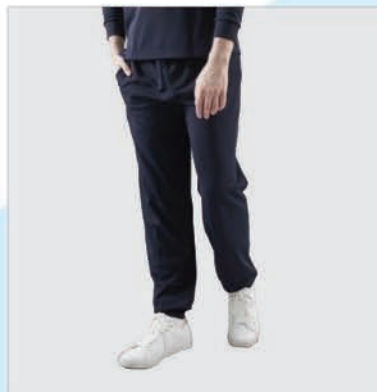
**Basic model 90 made from HT2 with fabric cuffs**



**The reusable underwear pants** is ultra light and breathable. It's made from lightweight micropolyester and has cuffed legs.



**Trousers**  
Waistband with elastic and drawstring  
Knitted cuffs at the bottom of the legs  
Small inside pocket (right front), can be used as marker fabric



**Trousers**  
Waistband with elastic and rawstring  
2 side pockets  
Cuffs in main fabric at the bottom of the legs



**Undergarment Trousers**  
Polyester fabric Under-trousers with two-piece legs  
Polyester / lycra cuffing at ankles  
24mm tape tie fastening at waist, secured with bartack at centre back of waist  
Horizontal three-division accessory loop sewn to right leg seam as worn located 30cm down from top edge of waistband and centred over seam  
:: 3cm division at centre, 2cm wide divisions at ends  
:: Finished length of 7cm  
No pockets



**BCR® Cleanroom socks** provide the next level of cleanroom foot health and operator comfort during regular and extended wear. They are engineered with 96% microdenier nylon and 4% Lycra. The microdenier technology provides the sock with superior cool feeling and comfort. Because of the enhanced wicking function, contact discomfort associated with wearing regular cotton or polyester socks is greatly reduced.

#### Features

- 96% microdenier nylon and 4% Lycra
- One size fits all
- Extremely soft and comfortable
- BCR® Cleanroom socks are over 1,000 times cleaner than regular cotton/polyester socks
- Autoclavable (121°C, 30 minutes)
- Colour: White
- 6 pairs per pack for individual use

#### Technology

- Advanced technology for extreme moisture management
- Constructed using a special seamless technique, no-run and non-ravel
- Designed and manufactured principally for cleanroom applications
- Low fibre shed

#### Benefits

- Reduced sock degradation over extended wear due to oils and sweat
- Long lasting freshness and cooling for operator
- Reduced odour caused by foot perspiration
- Provides microdenier softness for operator comfort
- Designed for all day comfort
- Meets the requirements of EU GMP Annex 1 section 7.14



**Choice® Cleanroom Socks** are made of continuous filament polyester yarn and are laundered and packaged in a Class 5 cleanroom to minimise bioburden levels and reduce particulate contamination in critical environments. The mid-calf length and elastic cuff result in a comfortable secure fit for extended wear.

#### Features

- 99% Continuous filament polyester, 1% spandex
- One size fits all
- Mid-calf length with elastic cuff for secure fit
- Soft and comfortable
- Laundered and packaged in a ISO Class 5 cleanroom
- Colour: White
- 10 pairs per pack

#### Technology

- Constructed with continuous filament yarns to reduce fiber and particle shedding
- Cleanroom laundered and packaged

#### Advantages

- Meets the requirements of EU GMP Annex 1 section 7.14
- Cleanroom laundry process reduces fibre and particle shedding and minimizes bioburden
- Over 1000 times cleaner than regular polyester/ cotton socks
- Comfortable and durable for all day wear
- A cost effective, clean and disposable alternative to operators' own socks
- Autoclavable (121°C, 30 minutes)



**Clean Room socks** from P2C are reusable socks made of 100% polyester.

**Materials & Properties:**

- Materials: 100% Polyester
- Color: white
- Washable up to 90°
- ISO 5
- Do not bleach
- Do not dry clean
- Hang dry
- Do not iron
- Socks conform to category II of the IEST-RP- CC-003.4 standard



**Cleanroom socks**

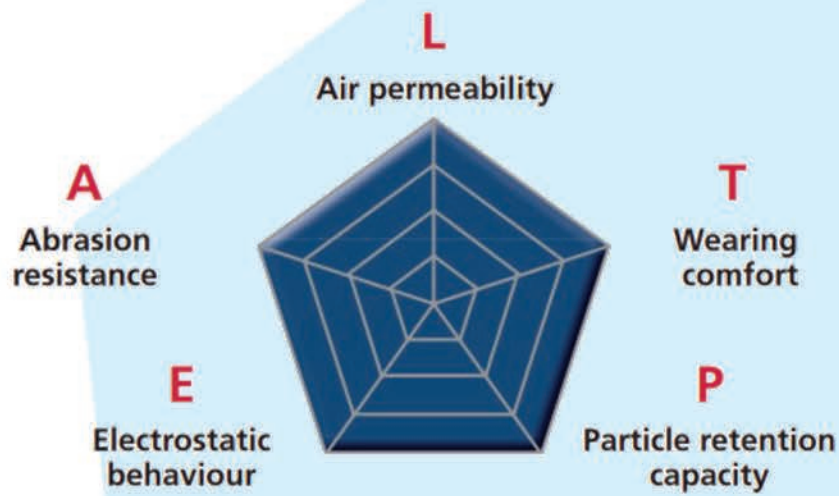
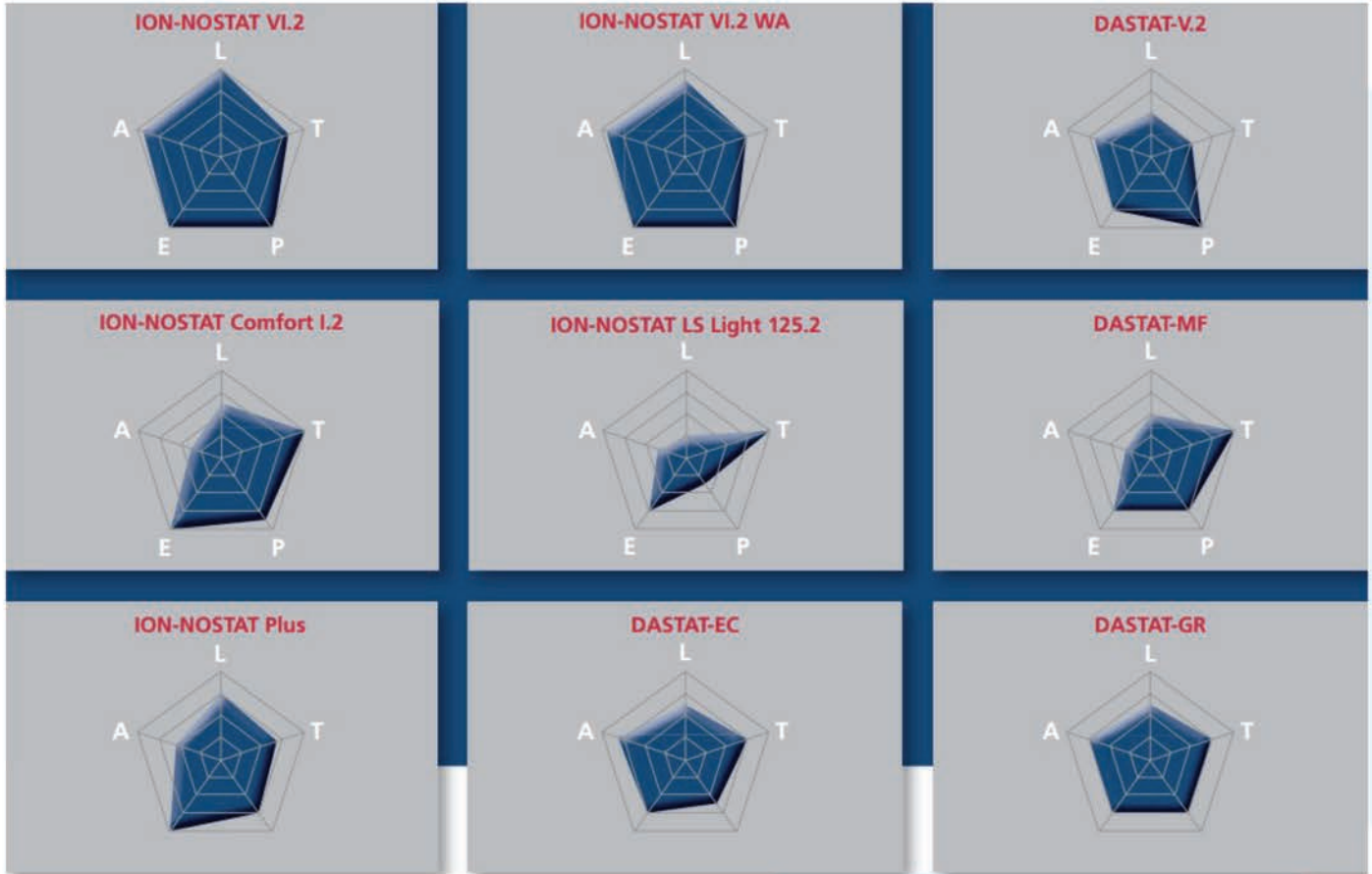
- 97% polyamide + 3% elastane
- Washable up to 60°C
- Colour:
- Size 40-44: White with a blue border
- Size 45-47: White with black border
- Recommendation: ISO 5



**ESD socks, white/grey"**

- Perfectly fitting, flexible ESD socks
- Conductive fibers in the toe and heel area
- With ESD logo
- Colour: white/grey
- Point-to-Point Resistance (Conductive Backside) R GP : < 10 6 Ω



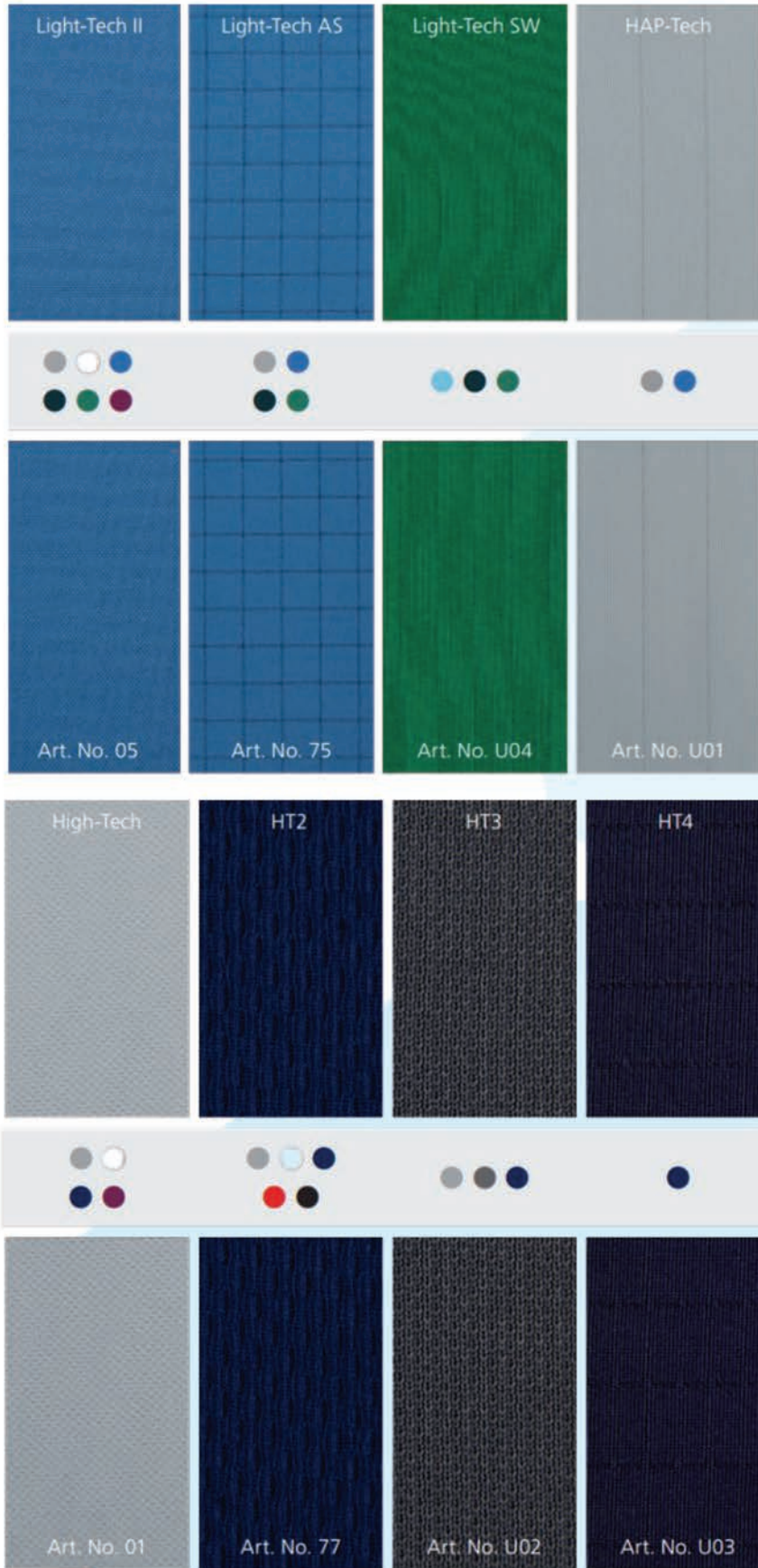


Recommendations (*)	Cleanrooms and associated controlled environments – Part 1 Classification of air cleanliness by particle concentration EN ISO 14644-1								Hygiene zones (microbiological controlled areas) according to GMP				
	3	4	5	6	7	8	9	low dust	A	B	C	D	E
<b>Fabric</b>													
ION-NOSTAT VI.2		■	■	■	■	■				■	■	■	■
ION-NOSTAT VI.2 WA		■	■	■	■	■				■	■	■	■
ION-NOSTAT Plus			■	■	■	■				■	■	■	■
ION-NOSTAT Comfort 1.2				■	■	■	■	■			■	■	■
ION-NOSTAT LS Light 125.2						■	■	■				■	■
DASTAT-V.2		■	■	■	■	■				■	■	■	■
DASTAT-EC				■	■	■	■	■			■	■	■
DASTAT-C					■	■	■	■			■	■	■
DASTAT-MF					■	■	■	■				■	■
DASTAT-GR			■	■	■	■	■	■		■	■	■	■
DASTAT-RS					■	■	■	■			■	■	■
DASTAT-P		■	■	■	■	■				■	■	■	■

Recommendations (*)	Cleanrooms and associated controlled environments – Part 1 Classification of air cleanliness by particle concentration EN ISO 14644-1								Hygiene zones (microbiological controlled areas) according to GMP				
	3	4	5	6	7	8	9	low dust	A	B	C	D	E
<b>Article description</b>													
Overall		■	■	■	■	■	■	■	■	■	■	■	■
Coverall with integrated hood		■	■	■						■	■	■	■
Jacket in combination with trousers				■	■	■	■	■			■	■	■
Lab coat					■	■	■	■			■	■	■
Full cover hood			■	■						■	■		
Eye slit hood		■	■	■						■	■		
Simple hood					■	■	■	■			■	■	■
Overboots		■	■	■						■	■		
Overshoes				■	■	■	■	■			■	■	■
Clogs with textile shaft			■	■	■					■	■		
Shoes with textile shaft			■	■	■	■	■				■	■	
Apron <sup>2</sup>		■	■	■	■	■	■			■	■	■	■
Sleeve protector <sup>2</sup>		■	■	■	■	■	■			■	■	■	■

<sup>2</sup> only in combination with the appropriate garments

In this table we suggest which models can typically be worn in which environment. When making the choice of cleanroom garments, the complete manufacturing environment needs to be considered. Factors such as the particular used cleanroom garment, as well as the chosen undergarment, influence the model recommendation to a high degree.



- white
- grey
- car grey
- dark grey
- black
- blue
- dark blue
- navy blue
- green
- red
- wine red

## Light-Tech II

Light-Tech II is a polyester fabric (100% PES) made from microfibre filaments. This gives it a unique silky feel (haptics) and its lightness of wear is convincing.

## Light-Tech AS

Referring to the proven polyester fabric Light-Tech II, conductive fibres were incorporated in warp and weft directions in a 5 mm pattern so that – depending on requirements – additional antistatic characteristics can be offered (98% PES / 2% Carbon).

## Light-Tech SW

The textile Light-Tech SW combines a low mass per unit area with an extremely pleasant feel (silk-like). Due to the use of conductive fibres in the warp direction, the fabric LightTech SW also has antistatic properties. The antimicrobial finish reduces possible germ growth as well as the often resulting odour formation already under the cleanroom garment.

## HAP-Tech

HAP-Tech is the heavy fabric quality of Light-Tech II and is primarily used for cleanroom-compliant undergarments, which should also be worn outside the controlled zones. Due to its texture, it is slightly warmer and also allows model designs that would not be possible with knitted fabrics and/or the lighter version Light-Tech II. In addition, HAP-Tech has conductive fibres and therefore has antistatic properties.

## High-Tech

This knitted fabric consists of a polyester knit fabric (100% PES). Due to the smooth surface it is very robust long-lived. In comparison with HT2 and HT3 the wearer comfort features are somewhat lower.

## HT2

In the range of undergarments, the HT2 knitted fabric has a continuously increasing popularity. Made from 50% COOLMAX® freshFX™ fibre and the remaining 50% from polyester fibres, this combination offers a very pleasant wearer comfort level. The fibre bonded, non-migrating silver ions of the COOLMAX® freshFX™ fibre restrict odour producing bacteria because of the antimicrobial effect of the silver. Undergarments manufactured from HT2 offer a first antimicrobial safety appliance under cleanroom garments and therefore are to be recommended for all applications in the life sciences area. An active humidity transport to the outside of the textile delivers extending beyond a very good thermal regulation and hence a pleasant climate. A valuable fresh feel during continuous moving can therefore be offered to the wearer.

## HT3

In addition to HT2 we offer in our standard range the further developed textile HT3, like HT2 a knitted fabric. HT3 is made from 48% high quality fibre Thermo°Cool Fresh™. The main feature of this fibre is the excellent thermal regulation of the body, as seen in high-quality sports clothing. Thermo°Cool Fresh™ guarantees very good heat transport in the form of water vapour to the outside and a simultaneous circulation of fresh air to the inside. Due to this dual regulation, the HT3 gives in cooler environments a warming effect and at high ambient temperatures a cooling effect. As with HT2, this knitted fabric is also using the technology of fixed bonded silver ions in the fibres and hence delivers the same functions of „antimicrobial“ and „odour inhibiting“ properties. The combination of 48% Thermo°Cool Fresh™, 48% PES and 4% Elastane offers optimal wear comfort, especially in colder environments. As undergarment, this product can in the real sense of the word be „warmly“ recommended.

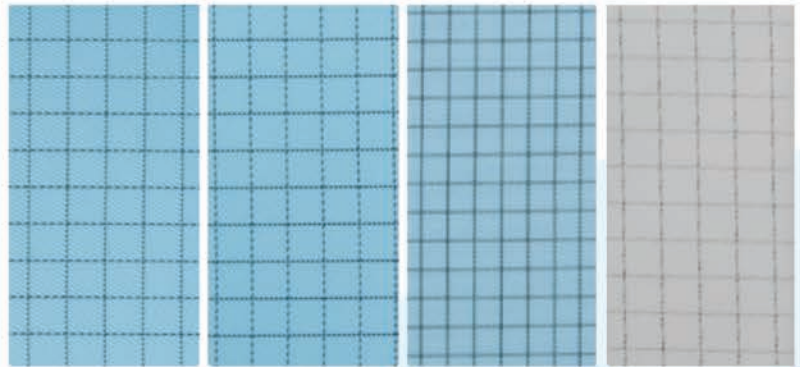
## HT4

A special feature within our range of functional fabrics is the knitted fabric HT4. This textile is a combination of Thermo°Cool Fresh™ (47.5%), Thermo°Cool™ (47.5%), polyester (3.5%) and 1.5% carbon/polyester. Therefore HT4 offers very similar product characteristics to HT3 but with additional antistatic properties.





Further information under  
Cleanroom fabric characteristics  
from page 18.

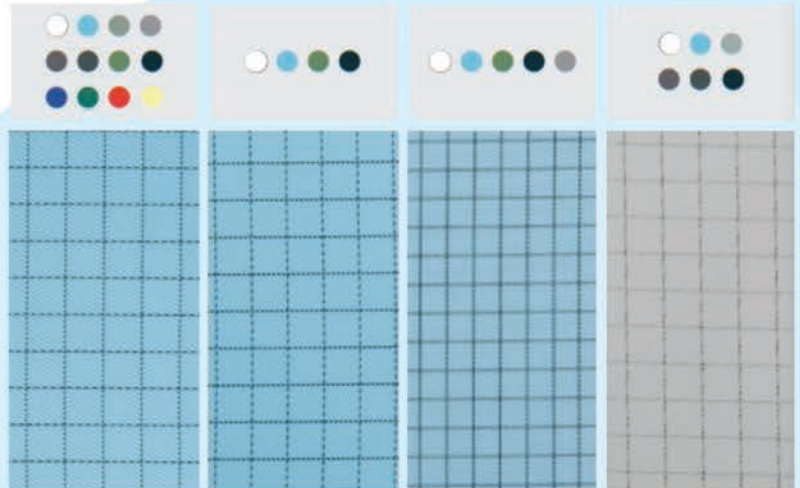


Fabric name	ION-NOSTAT VI.2	ION-NOSTAT VI.2 WA	ION-NOSTAT Plus	ION-NOSTAT Comfort I.2
Art. No.	17	10	68	B08
Fabric	98% PES, 2% carbon	98% PES, 2% carbon	96% PES, 4% carbon	98% PES, 2% carbon
Distance of the electrically conducting yarn	5 mm (K+S)	5 mm (K+S)	3 mm (K+S)	5 mm (K+S)
Weave construction	twill 3/2	twill 3/2	plain	twill 2/1
Surface weight g / m <sup>2</sup>	113	113	100	105
Air permeability acc. to DIN EN 9237 at 200 PA L / (dm <sup>2</sup> x min)	29.2	32.7	23	38.7
Water-vapour resistance* DIN EN ISO 11092:2014-12. R <sub>v</sub> = m <sup>2</sup> Pa/W	2.83	3.1	2.68	1.95
Particle retention according to VDI 3926 for ≥ 0.5 µm Test duration: 60 min. / raw gas concentration: 25 mg/m <sup>3</sup>	95%	92%	83%	96%
Particle retention according to VDI 3926 for ≥ 5.0 µm Test duration: 60 min. / raw gas concentration: 25 mg/m <sup>3</sup>	98%	96%	84%	97%
Triboelectrical behaviour acc. to DIN EN 1149-3 method 1 (ITV Denkendorf-TEV method)	very good	good	very good	good
Surface resistivity in ohm according to DIN EN 1149-1	10 <sup>7</sup> – 10 <sup>8</sup>	10 <sup>7</sup> – 10 <sup>8</sup>	10 <sup>8</sup> – 10 <sup>9</sup>	10 <sup>8</sup> – 10 <sup>9</sup>
Roughening disposition referring to DIN EN ISO 12947-4 (Martindale method – assessment of appearance change)	very low – low	very low – low	average	average – adequate

\* under stationary conditions (sweating guarded-hotplate test)

Colours

- white
- grey
- light grey
- dark grey
- car grey
- tretex grey
- elephant grey
- light green
- olive green
- petrol
- nil green
- turquoise
- light red
- red brown
- yellow
- light blue
- aventis blue
- atlantis blue
- bugatti blue
- dark blue
- midnight blue



ION-NOSTAT LS Light 125.2	DASTAT- V.2	DASTAT- EC	DASTAT- C	DASTAT- MF	DASTAT- GR	DASTAT- P
B04	64	79	63	B05	11	B07
98% PES, 2% carbon	98% PES, 2% carbon	98% PES, 2% carbon	99% PES, 1% carbon	98% PES, 2% carbon	98% PES, 2% carbon	99% PES, 1% carbon
8 mm (K+S)	5 mm (K+S)	5 mm (K+S)	8 mm (K)	5 mm (K+S)	5 mm (K+S)	5 mm (K)
twill 2/1	plain	twill 2/1	plain	twill 2/1	twill 2/1	plain
123	102	115	121	100	108	88
212	5.2	54.5	36.5	145	23.2	5
2.05	3.29	2.99	2.57	1.34	3.5	n. s.
67%	98%	65%	68%	96%	76%	100%
76%	99%	85%	80%	97%	86%	100%
good	good	good	adequate	satisfying	very good	n. s.
10 <sup>6</sup> - 10 <sup>9</sup>	10 <sup>6</sup> - 10 <sup>9</sup>	10 <sup>7</sup> - 10 <sup>9</sup>	10 <sup>7</sup> - 10 <sup>9</sup>	10 <sup>9</sup> - 10 <sup>11</sup>	10 <sup>7</sup> - 10 <sup>9</sup>	10 <sup>6</sup> - 10 <sup>8</sup>
adequate	low	low	average	adequate	low	satisfying

K = wrap direction  
 S = left direction  
 PES = polyester  
 C = carbon  
 n. s. = not specified

	Short knitted cuff		Elastic cuff with opening for thumb	
<p><b>Garments</b> <b>Arm and leg cuffs</b></p> <ul style="list-style-type: none"> <li>▶ knitted cuffs</li> <li>▶ conductive knitted cuffs</li> <li>▶ combined cuffs (knitted cuff with textile cover)</li> <li>▶ press studs</li> <li>▶ simple hem</li> <li>▶ elasticated cuffs (small and wide)</li> <li>▶ thumb loop</li> <li>▶ elasticated cuff with elastic strap</li> </ul>		Conductive knitted cuff		
		Elastic cuff with cover and additional elastic		Wide elastic cuff (40 mm)
		Long conductive knitted cuff		Normal hem
		Double elastic cuff (40 mm and 8 mm)		Press studs at hem
	Knitted cuff		Loop for mobile phone	
	Elastic cuff 40 mm and elastic stirrup	<p><b>Garments</b> <b>Pocket variations</b></p> <ul style="list-style-type: none"> <li>▶ open pockets (in various dimensions)</li> <li>▶ pockets with lockable flap</li> <li>▶ net pockets</li> <li>▶ pockets with outlets</li> <li>▶ removable pockets</li> <li>▶ other options</li> </ul>		
	Small elastic cuff (8 mm)			Pocket with outlets at sides cut diagonally
	Open pocket			Pocket with flap to close
				

	Loop for pencil short		Imprint with company logo	
Additional press studs at the back or on the side of the trouser leg for attaching overboots		Loop for pencil long		Collar with loop and two press studs
			Spiral zipper	
Net pocket for ID-card		Profile zipper		
	<p><b>Garments Additional special options</b></p> <ul style="list-style-type: none"> <li>▶ different zippers: profile, spiral, metal, two-way</li> <li>▶ reinforced cover strip for zippers</li> <li>▶ reversible collar (for lab coats)</li> <li>▶ personalised markings / coding</li> <li>▶ name clip bands</li> <li>▶ logos</li> <li>▶ net inserts and reinforcements</li> <li>▶ other options available on request</li> </ul>		Press studs to attach on sleeves/waist or trouser legs/thighs to avoid contact with the floor during the dressing procedure	
				
	Thumb loop		Clipband for names	
		Net under armpit		Adjustable waistband inside for width regulation

<p><b>Variations</b> Additional equipment for hoods</p>		<p>Ear net extra fine meshed</p>		
	<p>Full cover hood basic model 20 with flat top</p>		<p>Adjustable Velcro fastener</p>	
<p>Cover of the zipper slider at the chin</p>			<p>Face mask with press studs inside</p>	
	<p>Face mask with press studs outside</p>		<p>Bands under the armpits and press studs at the front avoid slipping when putting on the overall</p>	
		<p>Full cover hood basic model 20 with bouffant top</p>	<p>Face mask with Velcro fastener outside</p>	
	<p>Press studs to adjust the hood at the back</p>			<p>Buckle as stepless adjustment possi- bility at the back</p>
			<p>Special design: slits for temple spectacles</p>	

# temizoda marketi.COM

İçerenköy Mah. Şehitler Camii Sk. No: 2/2  
TR-34752 Ataşehir - İstanbul / TÜRKİYE  
T. : +90 216 573 09 35 • F. : +90 216 573 09 96  
info@temizodamarket.com



[www.temizodamarket.com](http://www.temizodamarket.com)